



Pearl Industries LLC



INTRODUCTION

We Pearl Industries L.L.C., take this opportunity to introduce ourselves as a leading manufacturing and trading company, operating in the Emirate of Sharjah, UAE.

As a company with diversified activities in construction and building materials, our major contribution to the air conditioning industry is the introduction of Pi Pre Insulated Duct Panels. A distributor since 2001 for pre insulated duct panels, we established our own manufacturing unit in 2004, with the brand name of Pi Pre Insulated Panels. Our range of products for the HVAC industry includes Pre Insulated Duct Panels, PIR and GI Ducts, Volume Control Dampers, Fire Dampers, Gravity Dampers, Non Return Damper, VAV's, Sound Attenuators, Access Doors, etc.

Our brand is approved by major consultants and contractors all over the GCC and is certified by the UAE Ministry of Civil Defense and Dubai Central Laboratory (DCL).

We aim to achieve customer satisfaction and long lasting relationship with our clients by providing best quality product, efficiency of service and cost competitiveness.

VOLUME CONTROL DAMPERS



Pi Volume Control Damper - Square & Rectangular



Frame: Available both in Galvanized steel 18 gauges and Polyisocyanurate 20 mm with embossed aluminium 80 microns.

Blade: Double skinned high quality aluminium aerofoil blades.

Bearing: 12mm Dia Nylon Bush.

Shaft: 12mm square Galvanized steel rod.

Linkage: 1.2mm thick galvanized steel linkage.

Quadrant: Manual Operation, locking type quadrant made of galvanized steel with full open and full shut markings.

Gasket: Black foam gasket at edges to prevent air leakage in shut off position.

GI Round Volume Control Damper

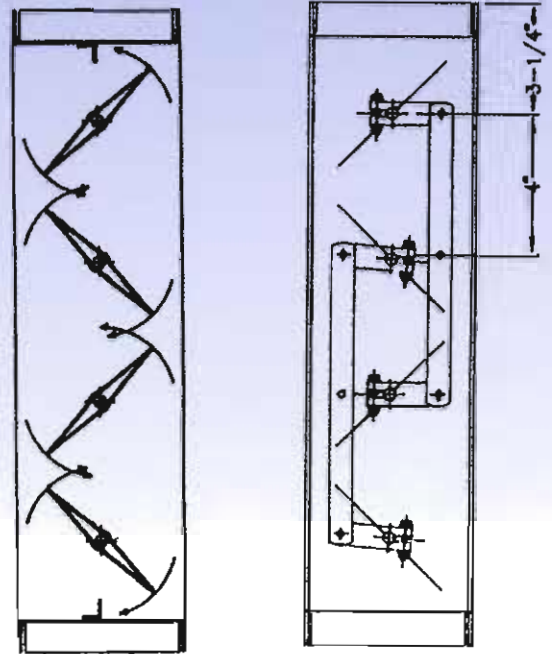


Designed to control air volume in circular ducts, dampers are easily accessible with round duct. Casing and blades are made of galvanized steel. The blade is mounted on Nylon bushes and is manually operated with a quadrant.

VCD1 A

PIR frame with double skinned high quality aluminium aerofoil blade. Moving opposed blades are on 4" center. They are mounted in nylon bushes operated by an exterior linkage which allows the damper to be opened and closed with minimum of air disturbance.

VCD1 A



VCD1 B

Same as VCD1A, but the frame is made of GI. The dampers are manufactured in multiple sections up to 80x80 inch.

Optional Extras

Manual control quadrant position indicator.

Control by electric motor directly coupled to the shaft.

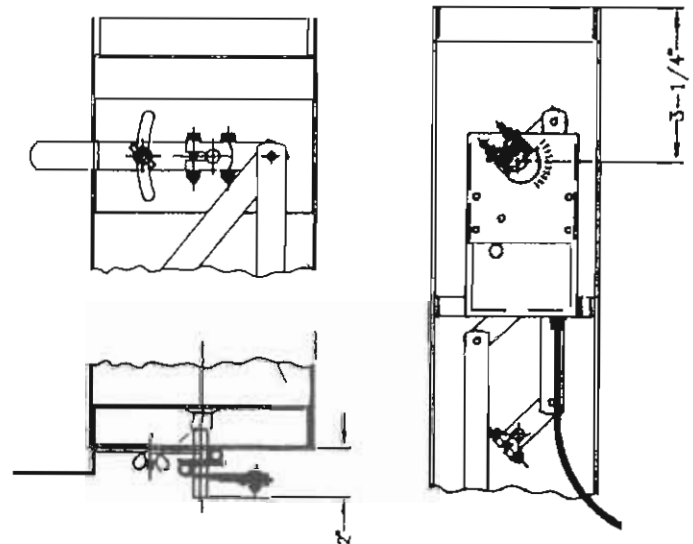
Support plate for a electric motor mounted in place of the quadrant damper.

Bronze brushes.

Airtight lateral joint.

Airtight blades.

Channel frame of 4³/₄ inches width.



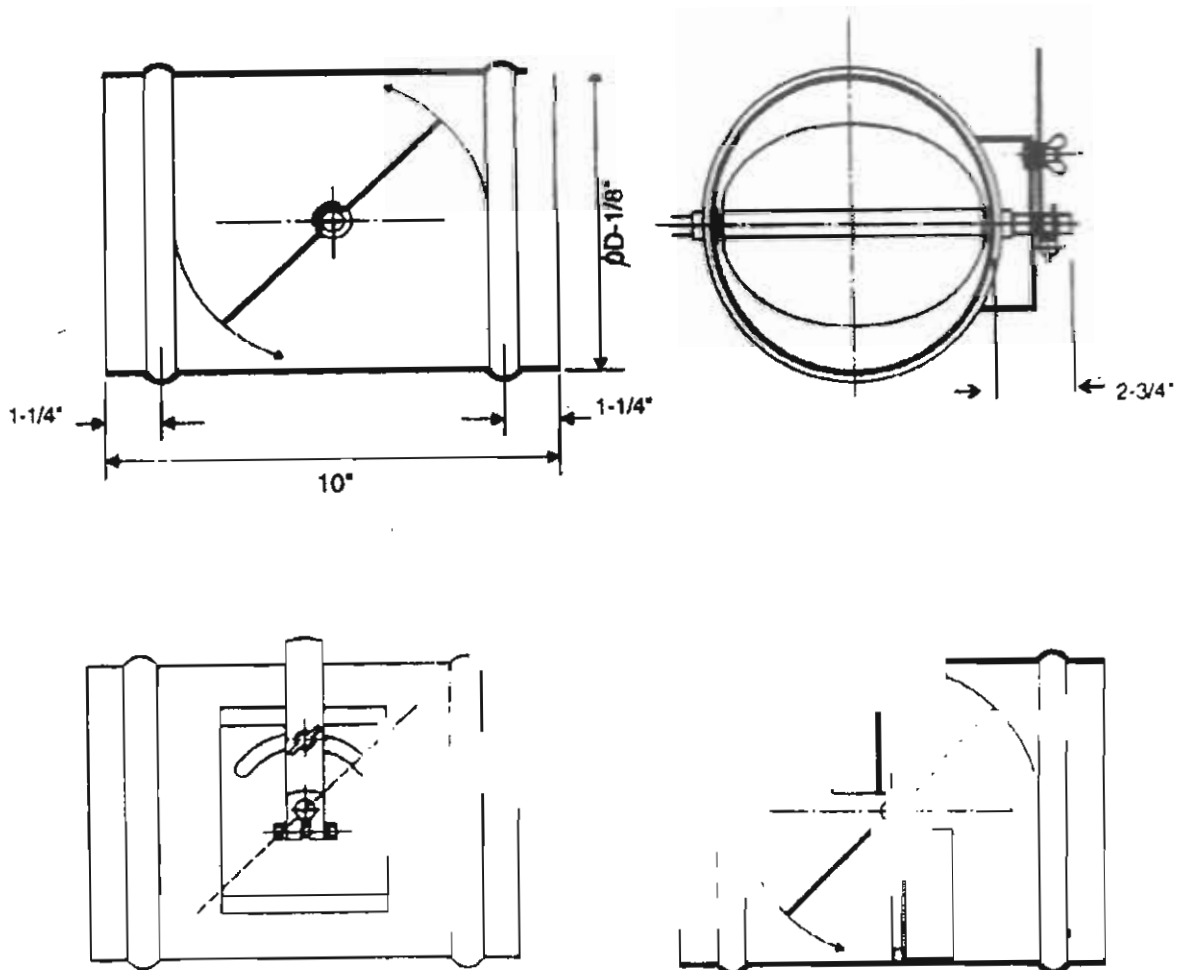
VCR-R1

Casing and Blades made from galvanized steel sheet. Adjusting blade mounted on nylon bushes with a manually operated quadrant damper. The movement of the blade permits regulation from fully open to almost complete shut off.

Options:

- Control by motor.
- Other system of control.
- Flanged ends for airtight joints.
- Bronze bushes.

| Ø D | Ø D |
|-----|-----|
| 4 | 10 |
| 5 | 12 |
| 6 | 16 |
| 8 | 20 |



Back Pressure Relief Damper Duct mounted or recess damper Pressure relief damper Non return damper



Adjustable blades made from aluminum sheet are connected by linkage at the upper edge.

BPD1

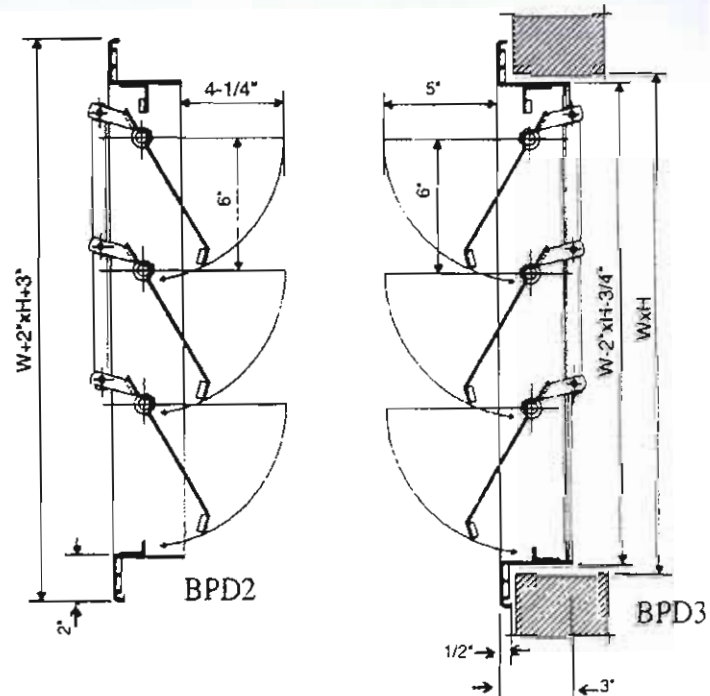
Valve design to be duct mounted or recessed. The frame is made from steel sheet rolled into a channel section.

BPD2

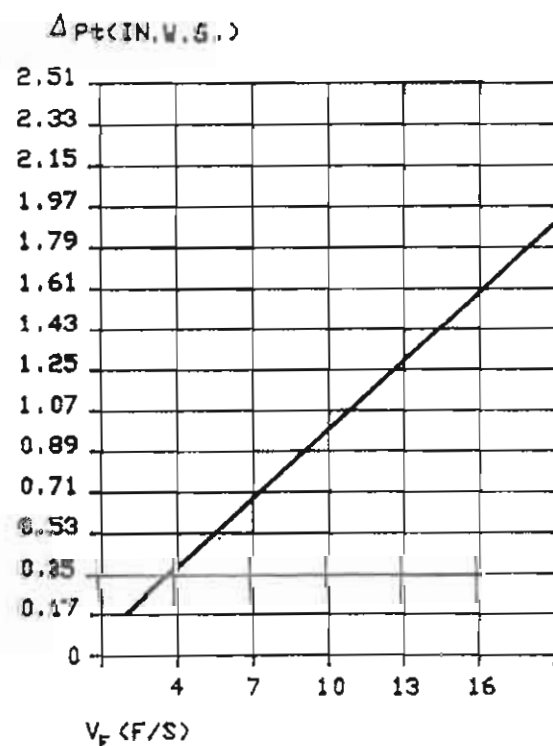
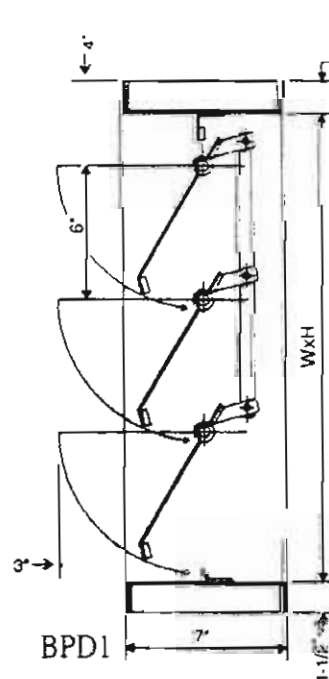
Pressure relief damper, wall mounted. Extruded aluminum frame.

BPD3

Non return damper, wall mounted. Extruded aluminum frame.



| H | W |
|----|----|
| 4 | 4 |
| 6 | 6 |
| 8 | 8 |
| 10 | 10 |
| 12 | 12 |
| 14 | 14 |
| 16 | 16 |
| 18 | 18 |
| 20 | 20 |
| 22 | 22 |
| 24 | 24 |
| 26 | 26 |
| 28 | 28 |
| 30 | 30 |



Fire Dampers



Pi Fire Damper

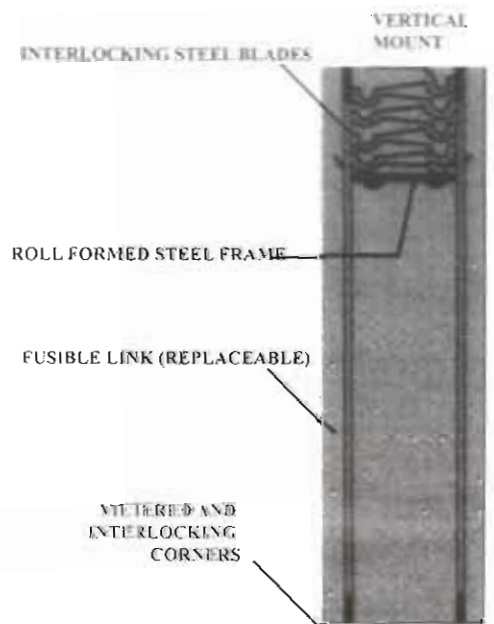
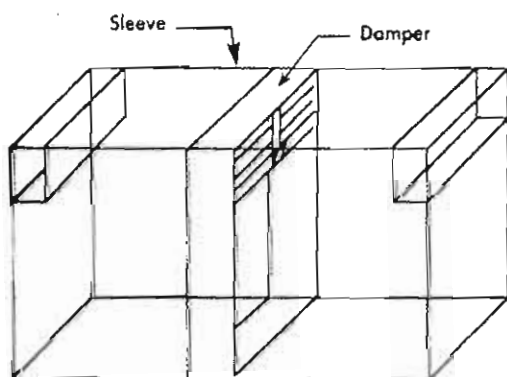
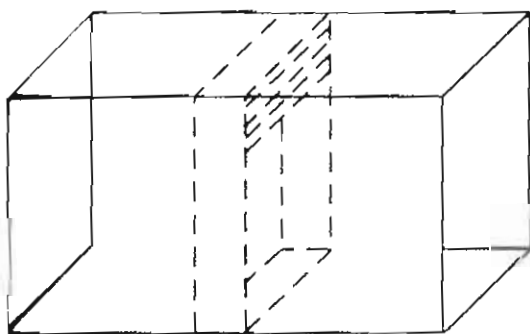


- ◆ Pi Fire Dampers are suitable for installation in sheet metal ductwork or Pre-insulated ductwork
- ◆ Available in variety of different casing, fully welded, square, rectangular and round shape.
- ◆ Available in Curtain Type and Multi-blade type.
- ◆ Suitable for Low, Medium and High Velocity applications.
- ◆ Standard curtain Blade Type models are used for fire rating up to 2 hours.
- ◆ Suitable for vertical and horizontal mounting.

| Specifications | | | | | | | | |
|----------------|---|--|------------------------------|--------------|------------------|---|--------------------|-----------------------|
| Type | Frame | Blades | Fusible Link Holder | Fusible Link | Rivets | Closure Spring | Blade Lock Bracket | Mounting |
| GI | Galvanized Steel Gauge 18 | Galvanized Steel Gauge 20 Curtain Type | Galvanized Steel Gauge 22 | 165 Deg F | Galvanized Steel | Constant Force Type, Stainless steel | Galvanized Steel | Vertical & Horizontal |
| PIR | Polyisocyanurate 20 MM with embossed aluminium 80 microns | Galvanized Steel Gauge 20 Curtain Type | Galvanized Steel Gauge 22 | 165 Deg F | Galvanized Steel | Constant Force Type, Stainless steel | Galvanized Steel | Vertical & Horizontal |



Fire Dampers are available complete with factory installed sleeves made of Pre-insulated sheet and Galvanized steel. Galvanized and stainless, are available from 22 gauge to 10 gauge and in length from 9" to 28".



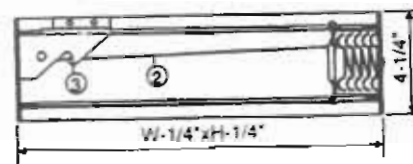
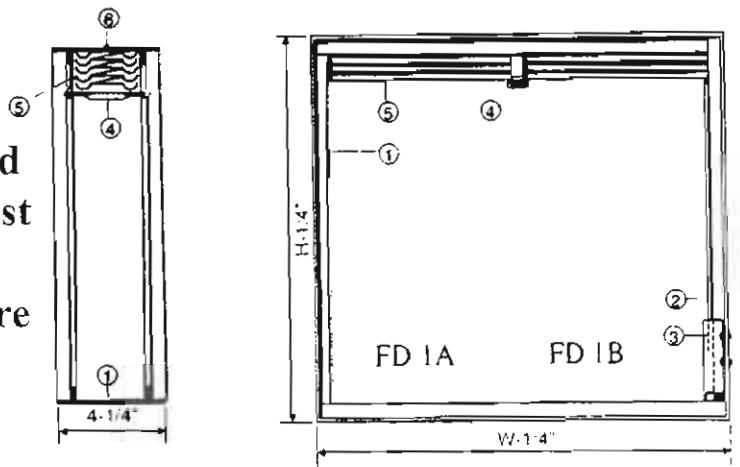
Curtain fire dampers with blades in air stream
Galvanized mild steel construction
Fire resistance rating 2 hr

Fire Dampers provide means of limiting fire areas in ventilating systems. The wide choice of sizes suitable for low, medium and high velocity applications that include rectangular, square, circular and flat connections of Fire Dampers makes them suitable for installation in walls and ceilings, ceasing the spread of fire through duct, walls or floors.

Fire Damper Models:

FD1A

Simple and reliable fire damper used in all low velocity systems with lowest airflow resistance of any in duct mounted damper. Closing springs are made of stainless steel.



1. Frame
2. Closing Spring
3. Locking Ramp
4. Fusible Link
5. Interlock Steel Blades
6. Top Blade Riveted to Frame.

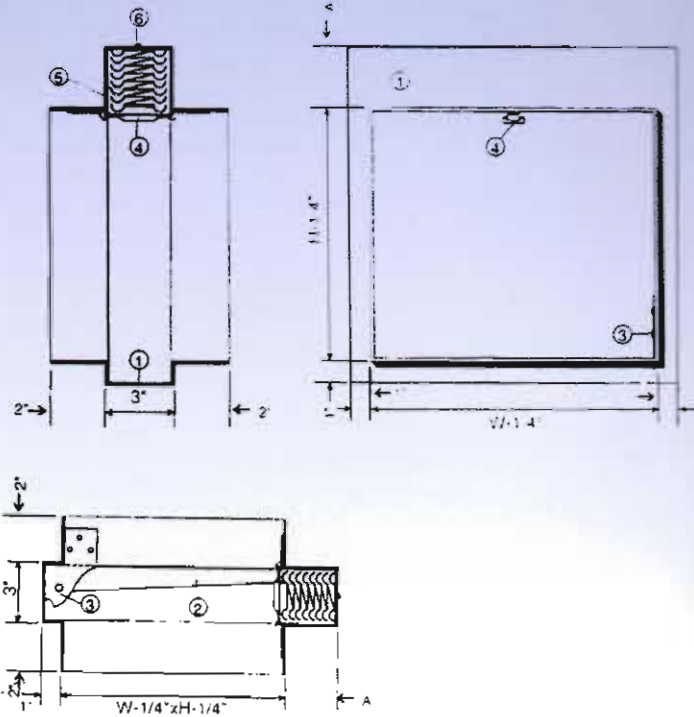
Fusible link operates at 74°C

Options:

- 135°F/57°C
- 212°F/100°C
- 248°F/120°C
- 286°F/141°C
- 360°F/182°C

FD2A

100% free area design and all seams welded frame allow absolute safety with no sacrifice in air handling characteristics when used in hi-pressure system. Closing springs are made of stainless steel.



Sizing Chart

| Opening (w) | Overall (A) |
|---------------|-------------|
| 4" up to 12" | Extra 3" |
| 13" up to 21" | Extra 4" |
| 22" up to 28" | Extra 5" |
| 29" up to 37" | Extra 6" |
| 38" up to 46" | Extra 7" |
| 47" up to 54" | Extra 8" |

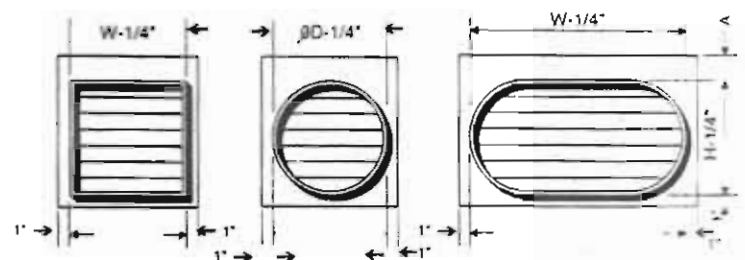
1. Frame
2. Closing Spring
3. Locking Ramp
4. Fusible Link
5. Interlock Steel Blades
6. Top Blade Riveted to Frame.

Codes:

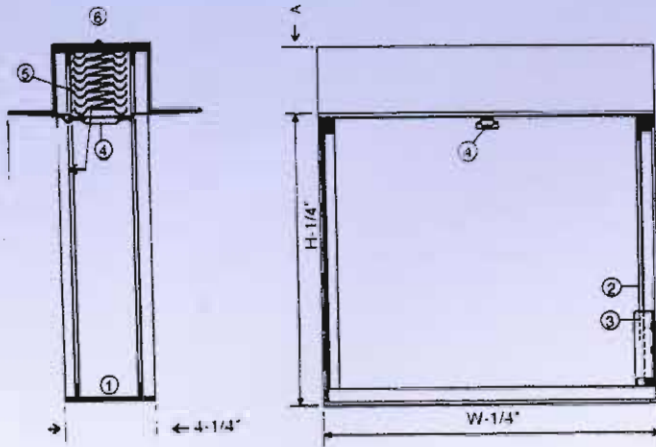
FD2A for squared or rectangular spigots.

FD2A-R for circular spigots.

FD2A-V for oval spigots.

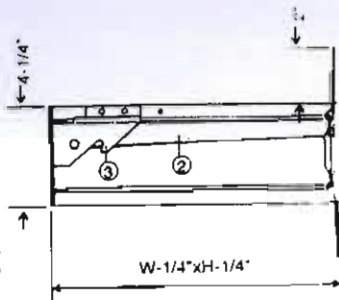


All Spigots are 1" far from each frame at each side.



FD3A

Completely recessed blade pack combined with standard (B) cap overlap for easiest installation. Suitable for medium and high velocity systems. Closing springs are made of stainless steel.



1. Frame
2. Closing Spring
3. Locking Ramp
4. Fusible Link
5. Interlock Steel
Blades
6. Top Blade Riveted
to Frame.

Available sizes:

Single unit

Minimum : 4x4 inch

Maximum : 48x41.8 inch

Multiple section units

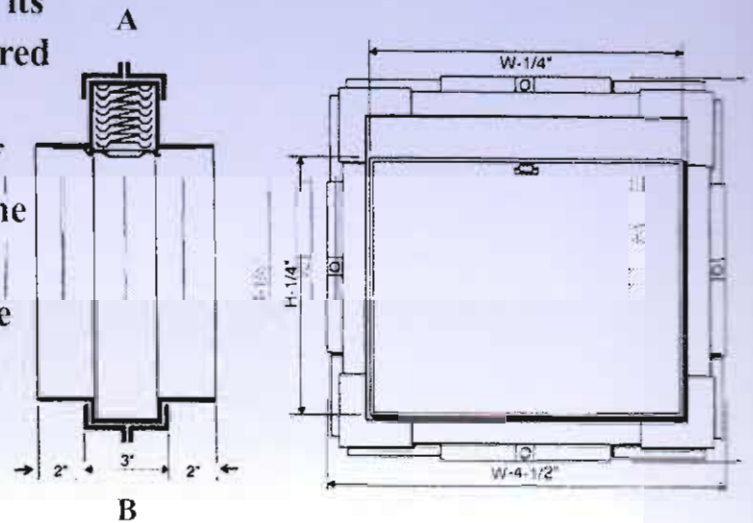
Larger sizes can be achieved by use of multi-section contact factory for details

Sizing Chart

| Duct open height (H) | Overall height (A) |
|----------------------|--------------------|
| 4" up to 12" | Extra 2" |
| 12" up to 21" | Extra 3" |
| 22" up to 28" | Extra 4" |
| 29" up to 37" | Extra 5" |
| 38" up to 46" | Extra 6" |

Mounting frame

The installation frame is Assembled with its respective Fire shutter damper and Delivered to site as one unit. This unit should be installed centrally within the thickness of the surrounding wall or floor such that the center line of the frame is a minimum distance of 2" from the nearest face of the wall or floor. The gap between the frame should then back-filled with concrete or mortar both sides of the frame.



Options:

Microswitches: These allow remote position indication of whether the damper is opened or closed both as status indication, during testing of fire dampers, or as an alarm trigger in the event of the fire damper closing.

Solenoids: Normally de-energized solenoids allow remote operation of the damper Available in 24V, 110V, or 240 V versions. A Fusible link is incorporated. Galvanized steel frame and stainless steel blades

Stainless steel frame and stainless steel blades.

Holding magnets:

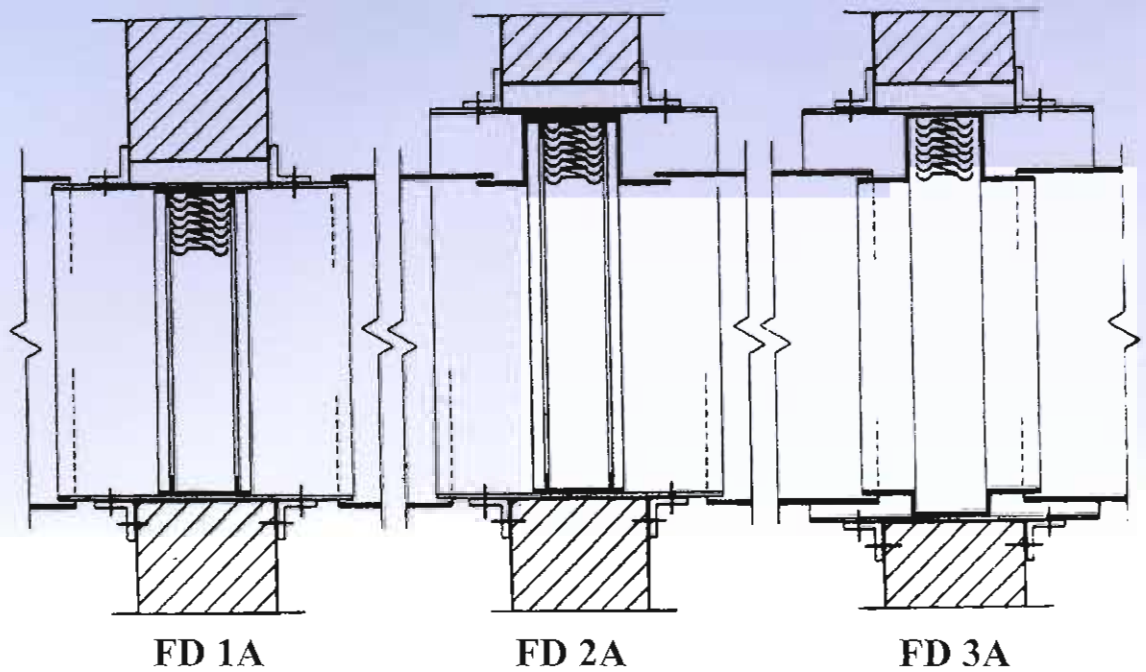
As an alternative to the solenoid for systems that are normally, energized, this type of actuator automatically operates in the event of an interruption to the electricity supply (24 VDC or 220 VAC). When complimented with a rectifier, maybe used with A/C supply. Also incorporates a fusible link.

Sizing Chart

| Duct open (W) | Frame overall length(B) |
|---------------|-------------------------|
| 4" up to 13" | Extra 5½" |
| 13" up to 22" | Extra 6½" |
| 22" up to 30" | Extra 7½" |
| 30" up to 38" | Extra 8½" |
| 38" up to 47" | Extra 9½" |
| 47" up to 54" | Extra 10½" |

| Duct opening Height (H) | Frame Overall width (B) |
|-------------------------|-------------------------|
| 4" up to 59" | Extra 4½" |

Installation details



Installation Requirements

The installer should note that the installation and location of access panels is to be the satisfaction of the Fire Protection Authority.

Installation

The damper should be installed centrally within the surrounding wall or floor thickness with a minimum distance of 1" from the nearest face of the wall or floor. The damper should be installed in a rectangular galvanized steel sleeve with a minimum thickness of 0.048". This sleeve should be attached to the damper by means of 1/4" - bolts at maximum of 12" centers. This sleeve should be of suitable length through the wall or floor opening to enable the fitting of the cover angles and ductwork.

The cover angles should be attached to the sleeve by 0.24 inch-bolts at a maximum of 12 inches centers and should form a complete frame around the sleeve and cover over the expansion gap required between sleeve and wall or floor opening.

This gap should be in the order of 1% of linear measurement (width or height) and should be filled with compressible, non-combustible material or soft packing (mineral wool). The cover angle should be of such a size as to always form a cover over the wall or floor opening of 1 inch minimum, and should be manufactured from a minimum size of 30x40x3mm. steel angle. All fixing must be positioned clear of the damper blade path so as to prevent proper closure.

FD 1A

Attach damper inside sleeve and bolt up, and then fix one complete side the cover angle framing. The damper can now be slid into the wall or floor opening and positioned centrally with in this opening using soft packing in the expansion gap. Other side of the cover angle can now be fitted and then the ductwork can be connected to the sleeve.

FD 2A

All as FD1A but the ductwork will be fitted to the sleeve on three sides and the damper at the channel section keeping the blades out of air stream.

FD 3A

All as FD 1A. but the duct work will be fitted to the damper spigot and not the sleeve



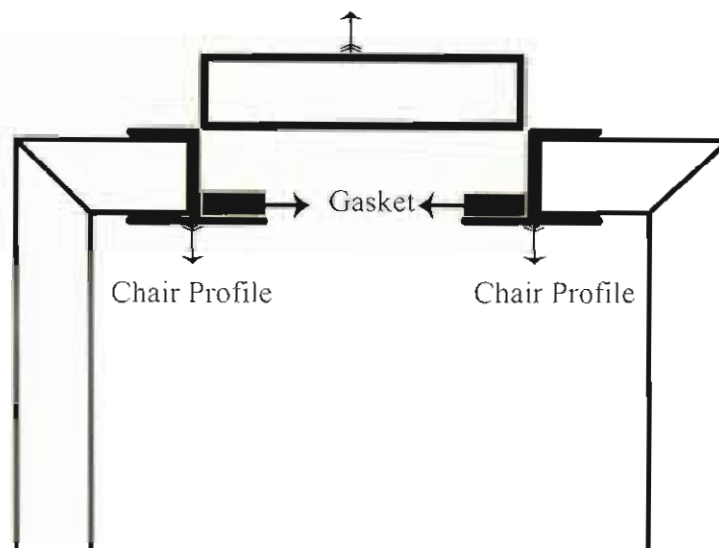
ACCESS DOOR

Features:

The insulated door panel, along with the gasketing between the door and frame assures a tight seal without obstruction in the air system. Insulated access doors are designed to provide entry to duct work for inspection and service of fire dampers and other equipment, they are available with either a removable or hinged door in sizes up to 24"x24".



U Profile



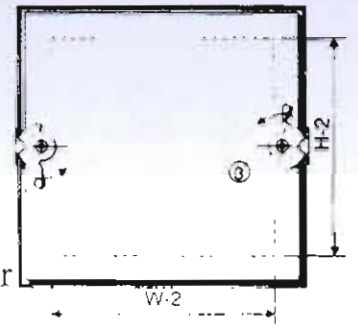
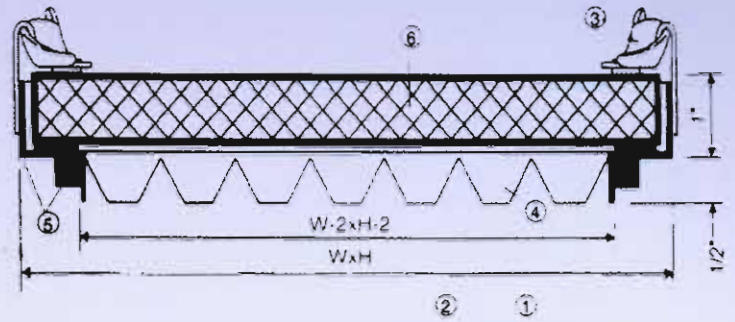
AD 1A

Access Panels of 1 inch thickness with double walled and mineral wool insulation. Designed to provide access to fire dampers, volume control dampers filters etc., self tightening cam-locks 2 per unit upto 14 inch, 4 per unit on larger sizes.

AD 1B

Continuous hinge on one edge. One cam-lock on opposite edge up to 14 inch. Two cam-lock on opposite edge on larger sizes.

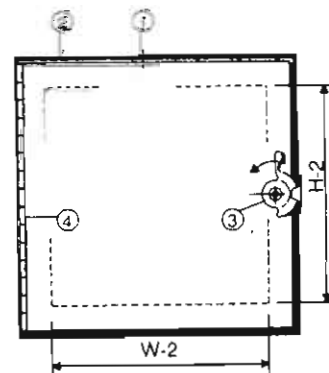
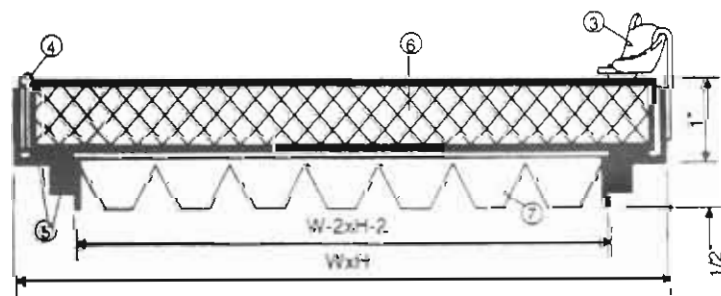
AD 1A



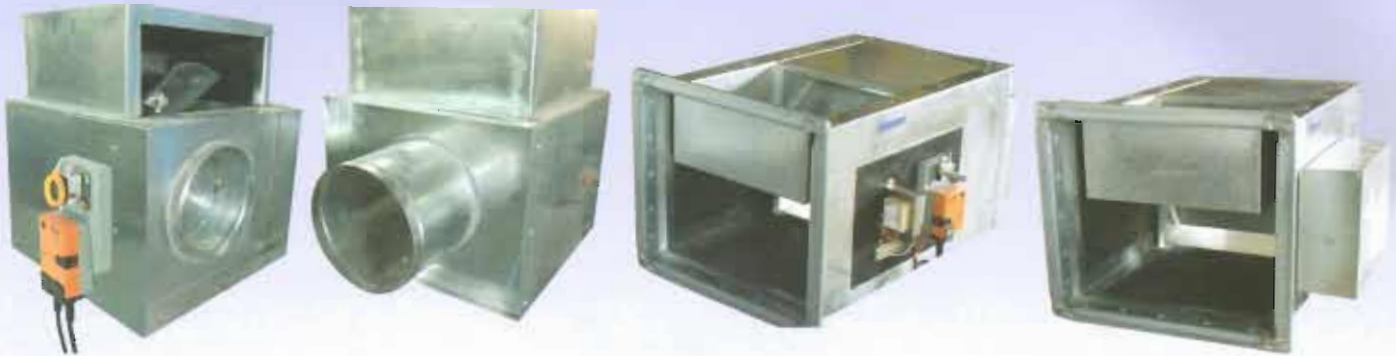
1. Door Panel
2. Frame
3. Camlocks
4. Notched Knock-Over Edge
5. Gasket
6. Mineral Wool Insulation

AD 1B

1. Door Panel
2. Frame
3. Camlocks
4. Continuous Hinged Edge
5. Gasket
6. Mineral Wool Insulation
7. Notched Knock-Over Edge



Series 100 BP VAV Box - By Pass Type



General Information

Description: series 100 BP Air Terminal are designed to achieve variable air volume delivery of conditioned air to a room in single duct, constant volume air distribution system. Variable air volume control is achieved by directing air flow either to the room or to a bypass in a direct response to signals from the room thermostat. Series 100 BP Air Terminal are available with a variety of standard control sequences. Series 100 BP Air Terminal use a primary air damper working in concert with a bypass port damper, As the primary air damper closes, the bypass sport damper opens, and vice versa so that a constant volume of air is delivered by the air terminal, but varying amounts are delivered to the room or the bypass plenum. A locking quadrant on the inlet balancing damper determines the total air flow through the air terminal. The round (or oval) primary air valve is enclosed in an insulated sheet metal casing. Primary air damper blades have precision die cast zinc alloy shafts which rotate in self lubricating custom nylon bearing results in extremely low friction damper operation. Control components are shipped piped and wired and piping/wiring diagram is affixed to the mounting panel for field reference.

Construction: Series 100 BP Air Terminals are constructed of galvanized steel. The terminal casing, inlet plate and damper (damper contains two 24 ga. layers) consist of 24. ga steel. The universal control mounting panel and damper cylinder are 20. ga steel. insulation is 1" thick, R = 4.2 and dual density, coated fibrous glass that complies with the requirements of NFPA 90A, ASTM c-665 and UL - 181. The outlet plenum interior wall is lined with 24 ga metal, preventing air flow insulation exposure to the room. Series 100 BP Air Terminals are available is standard sizes of 6", 8", 10", 12", 14" and 16". Sizes 6", 8", and 10" have round inlet collars and sizes 12", 14", and 16" have equal flat oval collars. All basic terminals are 18 1/2" in height and 21 1/4" in over all length.

Performance: Series 100 BP Air Terminal are available for system pressure and system pressure independent applications. They are recommended for systems with static pressure up to 2" water gauge. Supply air capacity range 100 CFM depending on air terminal size.

| Size | CFM | Minimum Ps | NC Lp @ (derived from sound power data) | | | | | |
|------|------|------------|---|----------|-----------|----------|---------------------|----------|
| | | | Minimum Ps | | 1" Ps | | 1½" Ps + Minimum PS | |
| | | | Discharge | Radiated | Discharge | Radiated | Discharge | Radiated |
| 406 | 200 | 0.03 | 20 | <20 | 20 | 20 | 21 | 20 |
| | 300 | 0.08 | 20 | <20 | 20 | 28 | 24 | 20 |
| | 400 | 0.13 | 20 | <20 | 20 | 26 | 25 | 20 |
| | 600 | 0.30 | 20 | <20 | 27 | 27 | 34 | 20 |
| 408 | 400 | 0.02 | 20 | <20 | 20 | <20 | 20 | 20 |
| | 500 | 0.03 | 20 | <20 | 21 | 20 | 22 | 20 |
| | 700 | 0.05 | 20 | <20 | 25 | 20 | 28 | 20 |
| | 1000 | 0.10 | 20 | <20 | 30 | 22 | 34 | 26 |
| 410 | 600 | 0.02 | 20 | <20 | 20 | 20 | 28 | 20 |
| | 800 | 0.03 | 20 | <20 | 25 | 20 | 32 | 20 |
| | 1000 | 0.04 | 20 | <20 | 26 | 20 | 34 | 21 |
| | 1600 | 0.10 | 21 | <20 | 31 | 20 | 37 | 32 |
| 412 | 1100 | 0.04 | 20 | <20 | 22 | 20 | 31 | 24 |
| | 1200 | 0.05 | 20 | <20 | 23 | 20 | 29 | 24 |
| | 1700 | 0.09 | 20 | <20 | 25 | 20 | 31 | 26 |
| | 2200 | 0.15 | 21 | <20 | 28 | 26 | 31 | 32 |
| | 1500 | 0.05 | 20 | <20 | 26 | 20 | 32 | 24 |
| | 2000 | 0.06 | 20 | <20 | 28 | 20 | 33 | 25 |
| | 3600 | 0.21 | 25 | 20 | 32 | 26 | 32 | 33 |
| | 4000 | 0.25 | 31 | 22 | 36 | 29 | 43 | 35 |

calculated in accordance with international standard ISO 3741 comparison standard 880

Sound plus 1.5 dB
@ 300 CFM per

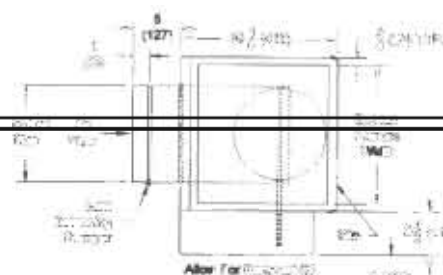
over 115°F

Technical Data

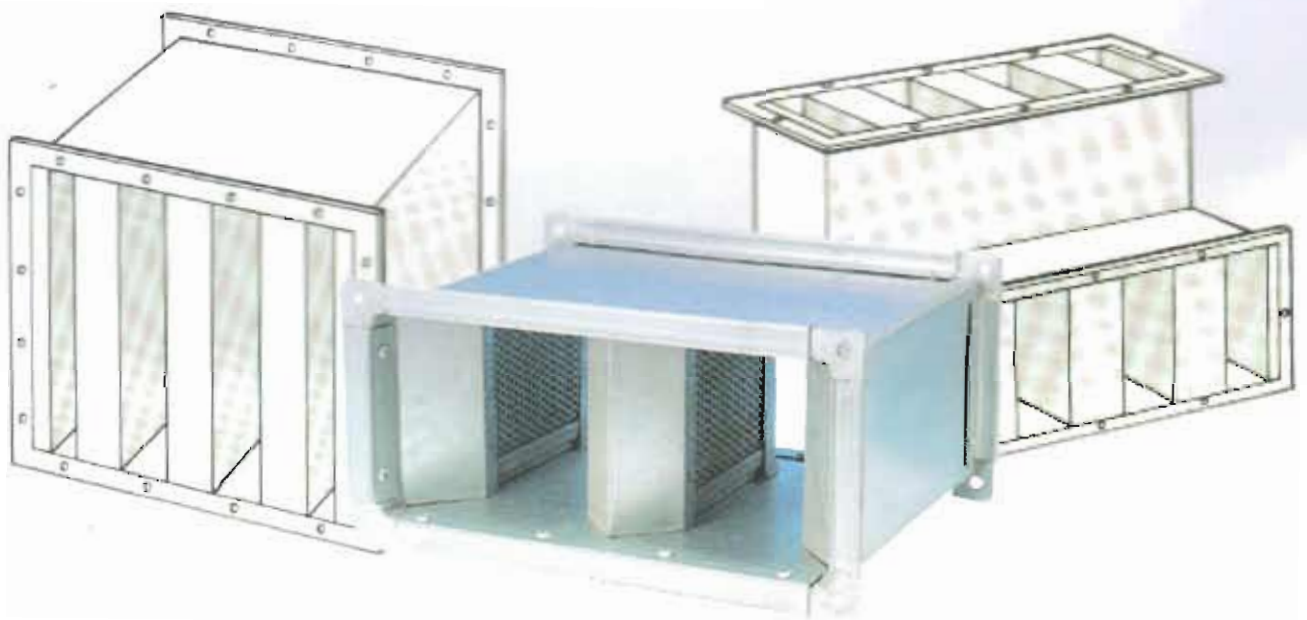
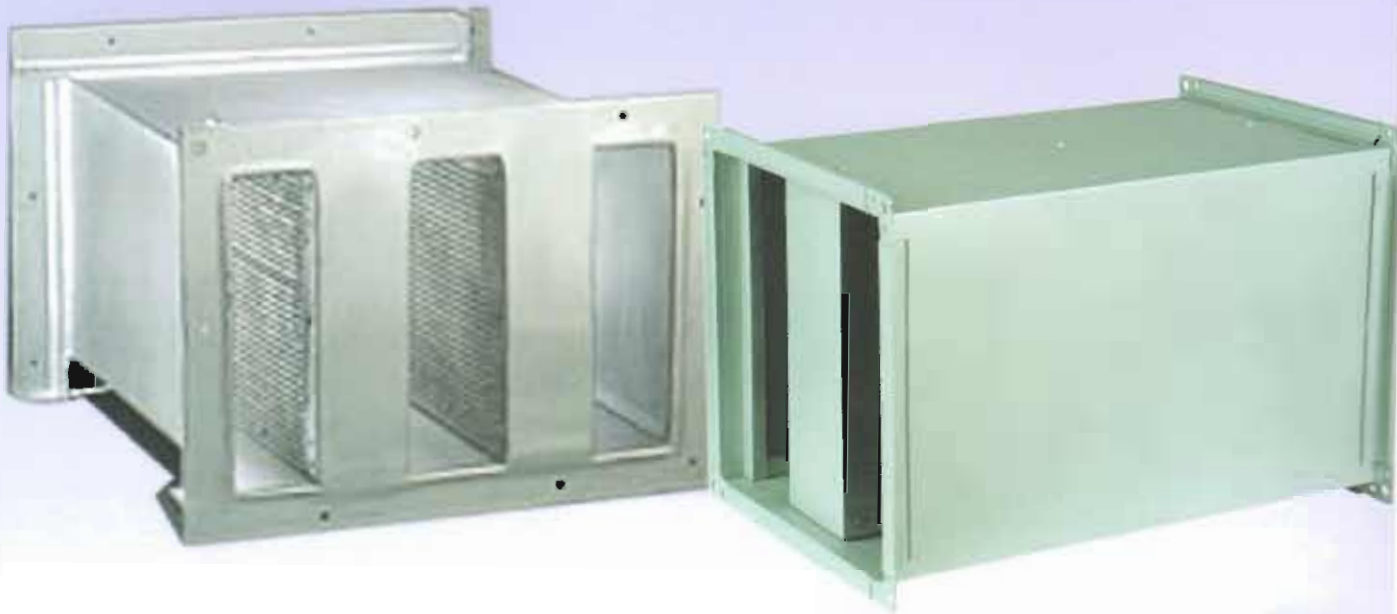
externally mounted 20 gauge control mounting panel. An
verified. All down stream accessories are attached to the

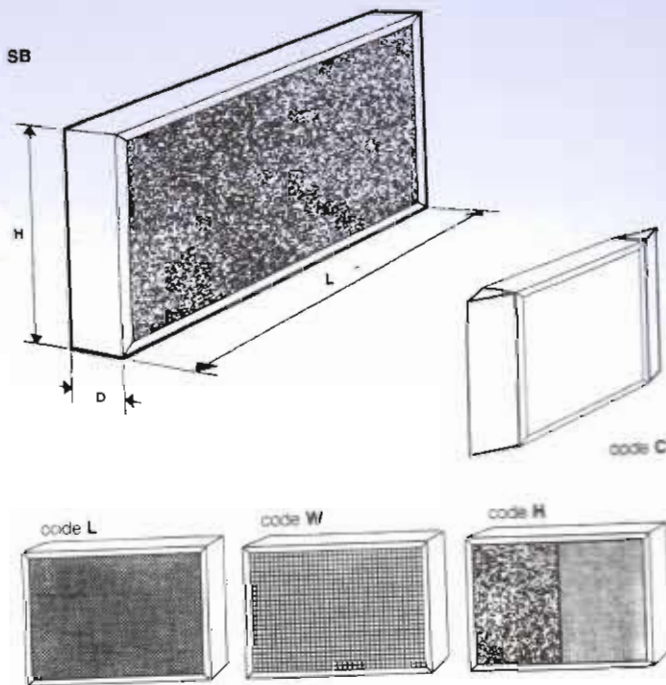
| Model No. | Intel Size | Width |
|-----------|------------|-------|
| 406 | 6" Round | 12" |
| 408 | 8" Round | 14" |
| 410 | 10" Round | 16" |
| 412 | 12" Round | 18" |
| 414 | 14" Round | 24" |
| 416 | 16" Round | 28" |

Air Terminal, are 18½" High



Sound Attenuators and Sound Baffles
Heavy duty type, galvanized mild steel construction
Air conditioning and industrial applications





Options

- * Galvanized screen mesh 12 x 12 x 1 mm Dia. On both sides, code W
- * Preforated galvanized sheet steel on both sides improving erosion resistance, code L
- * Polyethylene on both sides reducing Contamination risk, code P
- * Aerodynamic caps on both ends, Code C
- * Half metallic sound reomator absorber

For maximum attenuation at low frequency, code H

SA 100 - SA 200

Assembly consisting of reinforced flanges, Factory-drilled holes and factory Installed baffles.

Coding

- Type SA 100: D= 100 mm
S=40 to 100 mm
- Type SA 200: D=200 mm
S=80 to 200 mm

Sizes

- B (width) = n x (S+D)
- From 150 to 1200 mm for SA 100
From 300 to 2400 mm for SA 200
- H from 300 to 900 mm for SA 100
From 300 to 1800 mm for SA 200
In increments of 250 mm

Options

- * Double round to square adapters

Code RT2

Other options: see SB 100/200

Order procedure specification

SA20/1 6/2 B x H x L

1. Width of baffle
2. Number of baffles

SB 100 - SB 200

Sound baffles consisting of a U- Shaped Frame, filled with absorbing inert, Verminproof, non hygroscopic, non-Inflammable material, erosion protected, Allowing velocities upto 20 m/s. sizes.

D 100 mm for SB 100

200 mm for SB 200

H from 300 to 1800 mm

In increments of 150 mm

L from 500 to 2000 mm in increments of 250 mm

Note:

Baffles over 2000 x 1000

Will be delivered in sections.

| Normal Size | E | Attenuation in dB per octave bands (Hz) | | | | | | | | ØD | ØD2 | L | Weight Kg |
|-------------|-----|---|-----|-----|-----|------|------|------|------|-----|-----|------|-----------|
| | | 63 | 125 | 250 | 500 | 1000 | 2000 | 4000 | 8000 | | | | |
| 80 | 50 | 3 | 4 | 12 | 20 | 26 | 30 | 29 | 23 | 80 | 200 | 300 | 2.5 |
| | | 6 | 11 | 17 | 40 | 49 | 46 | 43 | 36 | 80 | 200 | 600 | 4.0 |
| 100 | 50 | 3 | 3 | 9 | 17 | 23 | 26 | 25 | 20 | 100 | 200 | 300 | 2.5 |
| | | 6 | 9 | 15 | 34 | 40 | 40 | 37 | 30 | 100 | 200 | 600 | 4.0 |
| | | 10 | 13 | 21 | 40 | 45 | 39 | 36 | 35 | 100 | 200 | 900 | 7.0 |
| 100 | 100 | 6 | 8 | 13 | 20 | 26 | 30 | 30 | 24 | 100 | 300 | 300 | 4.5 |
| | | 11 | 15 | 19 | 33 | 39 | 42 | 38 | 31 | 100 | 300 | 600 | 9.5 |
| | | 13 | 21 | 30 | 48 | 48 | 43 | 38 | 35 | 100 | 300 | 900 | 15.0 |
| 125 | 50 | 3 | 3 | 7 | 16 | 20 | 24 | 22 | 17 | 125 | 225 | 300 | 3.5 |
| | | 5 | 8 | 13 | 29 | 35 | 35 | 32 | 22 | 125 | 225 | 600 | 4.5 |
| | | 10 | 12 | 19 | 37 | 40 | 38 | 34 | 32 | 125 | 225 | 900 | 8.0 |
| 125 | 100 | 6 | 7 | 12 | 19 | 24 | 29 | 28 | 21 | 125 | 315 | 300 | 5.5 |
| | | 8 | 13 | 17 | 27 | 33 | 40 | 34 | 23 | 125 | 315 | 600 | 11.00 |
| | | 12 | 20 | 28 | 39 | 40 | 40 | 34 | 33 | 125 | 315 | 900 | 16.5 |
| 160 | 50 | 3 | 3 | 6 | 13 | 19 | 23 | 22 | 16 | 160 | 260 | 300 | 4.0 |
| | | 5 | 7 | 12 | 24 | 30 | 35 | 31 | 20 | 160 | 260 | 600 | 6.00 |
| | | 8 | 10 | 15 | 32 | 38 | 37 | 34 | 29 | 160 | 260 | 900 | 9.0 |
| 160 | 100 | 5 | 6 | 9 | 14 | 20 | 22 | 22 | 16 | 160 | 355 | 300 | 6.5 |
| | | 8 | 11 | 16 | 25 | 30 | 35 | 30 | 20 | 160 | 355 | 600 | 23.5 |
| | | 10 | 13 | 19 | 30 | 36 | 36 | 34 | 30 | 160 | 355 | 900 | 19.5 |
| 200 | 50 | 4 | 6 | 10 | 20 | 33 | 33 | 19 | 17 | 200 | 300 | 600 | 7.5 |
| | | 8 | 9 | 14 | 28 | 35 | 35 | 28 | 25 | 200 | 300 | 900 | 11.0 |
| | | 10 | 12 | 17 | 36 | 43 | 43 | 28 | 26 | 200 | 300 | 1200 | 14.0 |
| 200 | 100 | 6 | 9 | 13 | 22 | 32 | 32 | 21 | 18 | 200 | 400 | 600 | 16.0 |
| | | 10 | 12 | 18 | 29 | 34 | 34 | 29 | 20 | 200 | 400 | 900 | 23.5 |
| | | 12 | 16 | 24 | 37 | 41 | 41 | 30 | 22 | 200 | 400 | 1200 | 30.0 |
| 250 | 50 | 4 | 5 | 10 | 19 | 29 | 29 | 18 | 17 | 250 | 355 | 600 | 10.0 |
| | | 6 | 7 | 12 | 23 | 30 | 30 | 22 | 19 | 250 | 355 | 900 | 14.5 |
| | | 8 | 10 | 15 | 32 | 38 | 38 | 26 | 20 | 250 | 355 | 1200 | 18.0 |
| 250 | 100 | 6 | 7 | 12 | 21 | 29 | 29 | 19 | 17 | 250 | 450 | 600 | 18.0 |
| | | 8 | 11 | 15 | 25 | 31 | 31 | 21 | 19 | 250 | 450 | 900 | 27.0 |
| | | 10 | 14 | 21 | 33 | 38 | 38 | 26 | 20 | 250 | 450 | 1200 | 35.0 |
| 315 | 50 | 4 | 5 | 8 | 15 | 22 | 22 | 17 | 15 | 315 | 415 | 600 | 13.00 |
| | | 5 | 7 | 10 | 20 | 29 | 29 | 18 | 16 | 315 | 415 | 900 | 17.5 |
| | | 7 | 9 | 13 | 22 | 33 | 33 | 19 | 18 | 315 | 415 | 1200 | 21.0 |
| 315 | 100 | 5 | 7 | 10 | 16 | 22 | 22 | 16 | 15 | 315 | 515 | 600 | 21.0 |
| | | 7 | 10 | 12 | 20 | 31 | 31 | 20 | 18 | 315 | 515 | 900 | 31.0 |
| | | 9 | 13 | 17 | 25 | 35 | 35 | 24 | 19 | 315 | 515 | 1200 | 40.0 |
| 400 | 100 | 3 | 5 | 9 | 19 | 20 | 20 | 13 | 10 | 400 | 606 | 900 | 38.0 |
| | | 6 | 8 | 14 | 24 | 28 | 28 | 17 | 13 | 400 | 606 | 1200 | 50.0 |
| 500 | 100 | 3 | 4 | 9 | 15 | 17 | 17 | 12 | 8 | 500 | 711 | 900 | 43.0 |
| | | 5 | 7 | 13 | 18 | 23 | 23 | 15 | 12 | 500 | 711 | 1200 | 60.0 |
| 630 | 100 | 2 | 4 | 8 | 12 | 13 | 15 | 11 | 6 | 630 | 812 | 900 | 49.0 |
| | | 5 | 7 | 12 | 16 | 16 | 16 | 12 | 8 | 630 | 812 | 1200 | 69.0 |



رقم الترخيص: 4/C / 10

ترخيص مصنع

صدر هذا الترخيص استناداً إلى القرار الوزاري رقم (505) لسنة 2012م في شأن تنظيم خدمات الدفاع المدني .

- الاسم التجاري للمنشأة: اللؤلؤة للصناعات ذ م م
- إسم صاحب الترخيص: أنور عبدالرحيم محمد صالح علي
- إسم الشريك: محمد إسماعيل حسن صالح
- نوع النشاط: الواح مقاومة للحريق
- الإمارة: الشارقة المنطقة: الصناعية (15)
- تاريخ بداية المنشأة: 2008/3/11
- تاريخ الإصدار: 2013/4/10
- المعدات والأجهزة والمواد المرخص بتصنيعها من رقم: (1) إلى (3)

الهاتف: 06/5345266

الشارع: خ ش مليحة

تاريخ الإنهاء: 2014/ 3/ 6

يعتقد مدير عام الدفاع المدني / الشارقة



هذا الترخيص يصح بوزارة الإمارات العربية المتحدة لدى العمل بآليات الدفاع المدني والسلامة

رقم الترخيص: 4 / C / 10

اسم المنشأة: اللؤلؤة للصناعات ذ م م

كشف بالمعدات والأجهزة والمواد المعتمدة طبقاً للترخيص

| ملاحظات | النوع | اسم المعدة / المادة / الجهاز | م |
|---------|----------------------|---|---|
| | PI System | الواح لمجاري أنظمة التكييف والتهوية معزولة مسبقاً | 1 |
| | PI Fire Damper | مائع أسود الحريق | 2 |
| | PI RUBBER INSULATION | عازل مطاطي | 3 |

